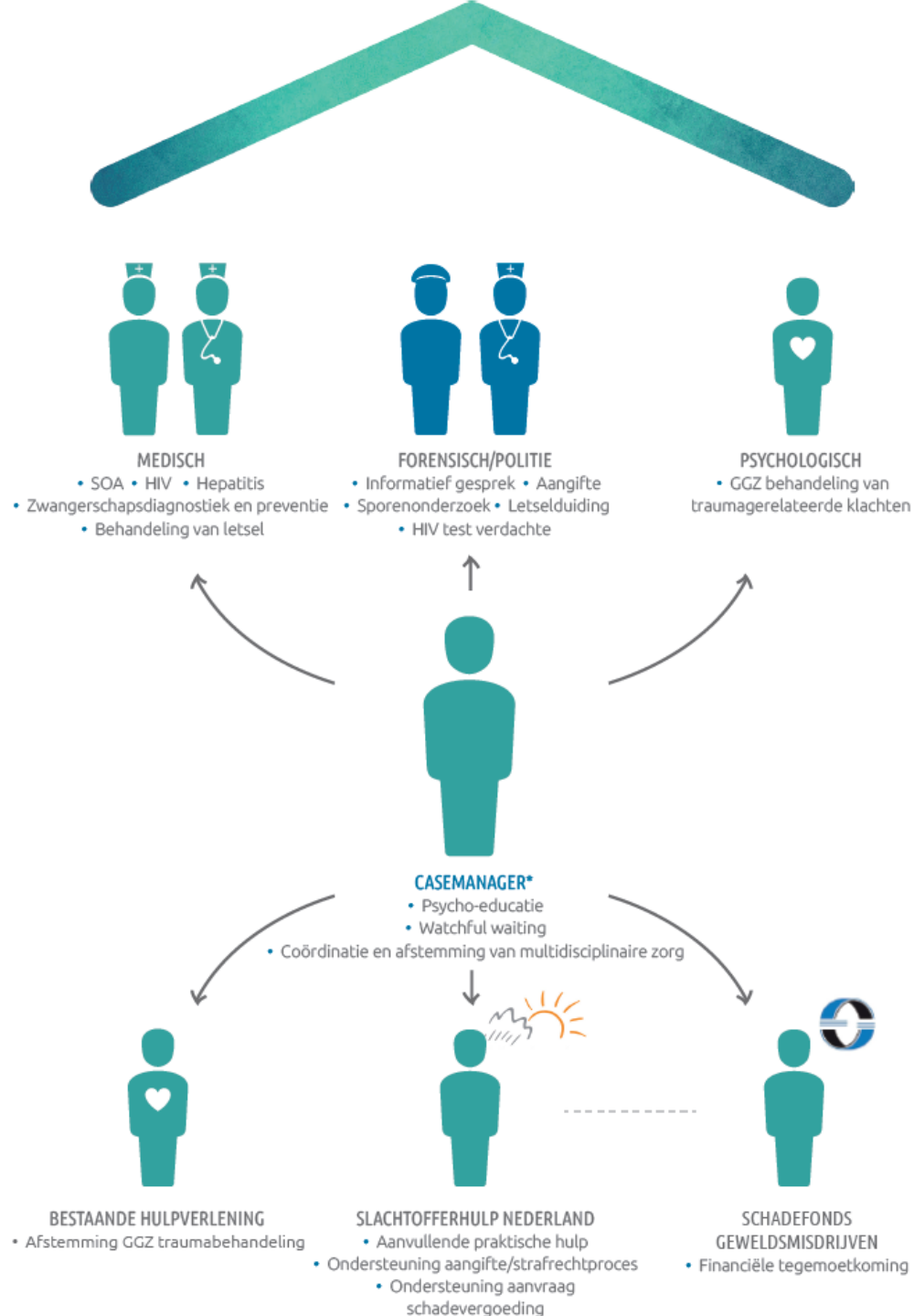




dr. Iva Bicanic, coördinator  
Landelijk Psychotraumacentrum / Centrum Seksueel Geweld UMC Utrecht





jan 2012 – okt 2014:

978 aanmeldingen  
Centrum Seksueel Geweld Utrecht



N = 170  
verkrachtingslachtoffers  
< 1 week

Exclusie

- > 1 week (n = 742)
- < 1 week zonder  
face-to-face contact (n = 66)

# Verkrachting < 1 week, N = 170

Gemiddelde leeftijd	22 jaar range 3-59 jaar
Jonger dan 18 jaar	40 %
Sexe	93 % ♀
Geboren in Nederland	82 %
Meerdere plegers	21 %

# Plegers/verdachten betrokken bij 170 slachtoffers

'Stranger rape'	20 %
'Peer rape'	30 %
Binnen liefdesrelatie	16 %
Binnen familie	5 %
Prostitutie	2 %
Mensenhandel	8 %
Professional	9 %
Via social media	3 %
Overig	7 %

# Verkrachting < 1 week, N = 170

Eerder seksueel misbruik	32 %
Eerdere fysieke mishandeling	34 %
Al bekend in hulpverlening	45 %
< 18 jaar	
- gescheiden ouders	60 %
- woont in instelling/pleegzorg	24 %
- ondertoezichtstelling	21 %

# Verkrachting < 1 week, N = 170

Medische zorg	94 %
Politie betrokken	85 %
Forensisch-medisch onderzoek	59 %
Aangifte	35 %
Psychologische zorg/traumabehandeling	80 %



# Landelijk Psychotraumacentrum UMC Utrecht



# Relationship of Childhood Abuse and Household Dysfunction to Many of the Leading Causes of Death in Adults

## The Adverse Childhood Experiences (ACE) Study

Vincent J. Felitti, MD, FACP, Robert F. Anda, MD, MS, Dale Nordenberg, MD, David F. Williamson, MS, PhD, Alison M. Spitz, MS, MPH, Valerie Edwards, BA, Mary P. Koss, PhD, James S. Marks, MD, MPH

Er is een sterke  
samenhang tussen het  
meegemaakt hebben van  
kindermishandeling en  
tal van ziektebeelden

**Results:** More than half of respondents reported at least one, and one-fourth reported  $\geq 2$  categories of childhood exposures. We found a graded relationship between the number of categories of childhood exposure and each of the adult health risk behaviors and diseases that were studied ( $P < .001$ ). Persons who had experienced four or more categories of childhood exposure, compared to those who had experienced none, had 4- to 12-fold increased health risks for alcoholism, drug abuse, depression, and suicide attempt; a 2- to 4-fold increase in smoking, poor self-rated health,  $\geq 50$  sexual intercourse partners, and sexually transmitted disease; and a 1.4- to 1.6-fold increase in physical inactivity and severe obesity. The number of categories of adverse childhood exposures showed a graded relationship to the presence of adult diseases including ischemic heart disease, cancer, chronic lung disease, skeletal fractures, and liver disease. The seven categories of adverse childhood experiences were strongly interrelated and persons with multiple categories of childhood exposure were likely to have multiple health risk factors later in life.

**A first hypothetical estimate of the Dutch burden of disease with respect to negative experiences during childhood**

Rebecca M. Kuiper  
Elise Dusseldorp  
Antonius G.C. Vogels

TNO Quality of Life



For more information, please contact:

✉ Elise.Dusseldorp@tno.nl

november 2010



# Ook in Nederland wordt er een sterke samenhang gevonden tussen het meegemaakt hebben van kindermishandeling en tal van ziektebeelden

*Table 4: A hypothetical estimate of percentages of people with a certain ACE score having certain health problems with respect to the number of persons within a certain ACE score*

ACE score	Risk factors						Disease conditions	
	smoking	severe obesity	physical inactivity	depressed mood	alcoholism	cannabis use	COPD	diabetes
	%	%	%	%	%	%	%	%
0	23	11	40	4	5	11	1	4
1	25	12	44	6	10	17	2	4
2	31	14	44	9	18	25	2	3
3	38	14	48	10	21	30	3	4
4 or higher	40	16	46	16	29	36	5	6
Reference	27	12	42	6	11	17	2	4

# Als je de odds samenvoeg dan leidt kindermishandeling tot de volgende odds ratio's:

---

- 4.4 posttraumatische stress stoornis
- 2.8 psychotische stoornis
- 2.8 verslaving
- 2.7 depressie
- 2.4 paniekstoornis
- 1.9 sociale fobie
- 1.8 gegeneraliseerde angststoornis

Teicher & Samson, 2013

Kinderen krijgen na  
kindermishandeling helaas vaak GEEN  
toegang tot evidence-based  
traumabehandeling voor PTSS, zoals:

Cognitieve gedragstherapie

EMDR

Schrijftherapie

Prolonged Exposure



---

Deze jongen heeft GEEN forensisch -  
medisch onderzoek ondergaan toen hij  
uit huis werd geplaatst .... 😞

# LECK

---

Wanneer sprake is van kindermishandeling:  
samenwerking tussen medische,  
forensische én psychologische disciplines!

---

“I know there is strength in the differences between us, and I know there is comfort where we overlap”

quote Ani DiFranco